

Preferred by Professionals



Roofing Wholesale Division Purchasing Guide

Preferred by Professionals



4675 W. 160th St.  
Cleveland, OH 44135  
800-321-9532  
www.oateyscs.com



**OATEYSCS**<sup>®</sup>  
Supply Chain Services



# Table of Contents

Product Description	Page Number
---------------------	-------------

---

## Self-Seal® Roof Flashings

Aluminum	2
Galvanized	2
Thermoplastic	3
Uni-Seal Flex	3

---

## Rain Guards Self-Seal®

4

---

## Multi-Size Self-Seal® Roof Flashings

4

---

## Color-Flash® Roof Flashing

5

---

## Electrical Service Mast (ESM) Roof Flashing

6

---

## Universal Pipe Flashing

6

---

## Arfco Deck-Master Boot

8

---

## Retro Master Boot

9

---

## Insert Drains

10

---

## Roof Drain Accessories

10

---

## Roof Drains

11

---

## Breathers and Vents

13

---

## Hand Cleaner

14



## Aluminum Self-Seal®



- Slides over pipe for pitch to 40 degrees.
- Rustproof .032 stamped aluminum standard base.
- Non-fading sealing collar.
- Rated 180°F continuous heat.
- Approved for Type B installations.
- UPC, SBCCI and BOCA listed.
- Not for hot-mopped or built-up roofs.
- 18" x 18" base for code required areas.
- Soft aluminum base (18" x 18") allows for easy molding to tile roofing.

Product No.	Description	U.P.C. Code	Cu.Ft	Pack	Ct. Wt.
12101	1-1/4" - 1-1/2" Aluminum Self Seal®	750405-121014	.73	12	6
12102	2" Aluminum Self Seal®	750405-121021	.73	12	6
12103	3" Aluminum Self Seal®	750405-121038	.91	12	7
12104	4" Aluminum Self Seal®	750405-121045	1.75	12	13
<b>18" x 18" Base Aluminum Self Seal</b>					
13101	1-1/4" - 1-1/2" Aluminum	750405-131013	1.86	12	15
13102	2" Aluminum	750405-131020	1.86	12	14
13103	3" Aluminum	750405-131037	1.86	12	20
13104	4" Aluminum	750405-131044	2.63	12	21

## Galvanized Self Seal®



- Slides over pipe-for pitch to 40°.
- Rustproof, stamped galvanized, 24 or 28 gauge.
- Non-fading sealing collar.
- 18" x 18" base for code required areas.
- Rated 180°F continuous heat.
- Approved for Type B installations.
- UPC, SBCCI and BOCA listed.
- Not for hot-mopped or built-up roofs.

Product No.	Description	U.P.C. Code	Cu.Ft	Pack	Ct. Wt.
12201	1-1/4" - 1-1/2" Galvanized Self Seal	750405-122011	.73	12	12
12202	2" Galvanized Self Seal	750405-122028	.70	12	12
12203	3" Galvanized Self Seal	750405-122035	.92	12	17
12204	4" Galvanized Self Seal	750405-122042	1.90	12	23
<b>18" x18" Base Galvanized Self Seal</b>					
11921	1-1/4" - 1-1/2" Galvanized	038753-119212	1.86	12	23
11934	2" Galvanized	038753-119342	1.86	12	23
11947	3" Galvanized	038753-119472	1.86	12	23
11950	4" Galvanized	038753-119502	2.63	12	26
<b>Galvanized Solar Self-Seal® Roof Flashings</b>					
13301	1/2", 3/4", 1" Galvanized	750405-133017	.73	12	11
<b>Solar Flashings</b>					
11830	1/2"- 1" Galvanized 11" x 14-1/2" base	038753-118307	.73	12	11
11831	1/2"- 1" Galvanized 18" x 18" base	038753-118314	1.90	12	23

# Roof Flashings

## Thermoplastic Self-Seal®



- Slides over pipe – for pitch to 40 degrees.
- Non-fading and non-cracking, rigid black thermoplastic base.
- Rated 180°F continuous heat.
- Approved for Type B installations.
- UPC, SBCCI & BOCA listed.
- Not for hot-mopped or built-up roofs.
- 3" self-seal flashing can be used on 3" plastic, copper, steel, or cast iron pipe simplifying inventory control.
- Matte finish blends in better with roof surfaces.
- 30 years of trouble-free "on-the-roof" experience with self-seal flashings.
- Ozone, ultraviolet, and weather resistant.
- Patented one-piece design.

Product No.	Description	U.P.C. Code	Cu.Ft	Pack	Ct. Wt.
14101	1-1/4" - 1-1/2" Thermoplastic	750405-141012	.64	12	6
14102	2" Thermoplastic	750405-141029	.64	12	6
14103	3" Thermoplastic	750405-141036	.80	12	8
14104	4" Thermoplastic	750405-141043	1.03	12	9

### Large Base

Designed to meet regional code requirements, our large base thermoplastic vent pipe flashing incorporates a 40% larger base than other standard flashings. Base Dimension 11 3/8" x 15 1/8".

11917	1-1/4" - 1-1/2" Thermoplastic	038753-119175	.80	12	9
11918	2" Thermoplastic	038753-119182	.80	12	9

### 18" x 18" Base

18" X 18" bases for code required areas.

11887	1-1/4" - 1-1/2" Thermoplastic	038753-118871	1.67	12	9
11888	2" Thermoplastic	038753-118888	1.67	12	9
11889	3" Thermoplastic	038753-118895	2.36	12	10

## Uni-Seal Flex Self-Seal®



- Slides over pipe – for pitch to 40 degrees.
- Flexible base conforms to most flat or contoured roof surfaces including clay tile.
- Non-fading TPR base and collar.
- No caulking needed.
- Rated 200°F continuous heat.
- UPC, SBCCI & BOCA listed.
- Not for hot-mopped or built-up roofs.
- Unique dual bead configuration that seizes the vent pipe with a locking grip preventing leaking entirely.

Product No.	Description	U.P.C. Code	Cu.Ft	Pack	Ct. Wt.
30101	1-1/4" - 1-1/2" Uni-Seal	750405-301010	.49	12	6
30102	2" Uni-Seal	750405-301027	.49	12	7
30103	3" Uni-Seal	750405-301034	.65	12	9
30104	4" Uni-Seal	750405-301041	.89	12	13

## Rain Guards Self-Seal®



- Use as a protective water shield (slides over existing flashing).
- No caulking needed.
- Non-fading sealing collar.

Product No.	Description	U.P.C. Code	Cu.Ft	Pack	Ct. Wt.
14122	1-1/4" - 1-1/2" Rain Guard	038753-141220	.14	36	2
14135	2" Rain Guard	038753-141350	.22	24	2
14193	3" Rain Guard	038753-141930	.31	24	3
14203	4" Rain Guard	038753-142036	.44	12	4

## Multi-Size Self-Seal® Flashings



- Slides over pipe - for pitch to 40 degrees.
- Rated 180°F continuous heat.
- Approved for Type B installations.
- UPC, SBCCI & BOCA listed.
- Not for hot-mopped or built-up roofs.
- One flashing accommodates 1-1/2", 2", and 3" pipes; the other, 3" & 4" pipes.
- Reduces inventory: 2 multi-size flashings fit 4 pipe sizes.
- Tear-away ring provides options for different pipe sizes.
- \*\*Patented design; collar is clinched into base.
- Collar expands and contracts with the pipe allowing pipe to move freely without rupturing the seal or lifting off the roof.
- Double seal insures leakproof fit around vent stack.
- Will not warp or crack - lies perfectly flat on the roof.
- 30 years of trouble-free on-the-roof experience with self-seal flashings.



Simply remove the inner ring at the indicated point on the collar and you'll have a perfect leakproof fit for pipes from 1-1/2" to 4".

\*\*Patent No. 4,526,407

Product No.	Description	U.P.C. Code	Cu.Ft	Pack	Ct. Wt.
-------------	-------------	-------------	-------	------	---------

### Multi-Size™ Self-Seal® Aluminum Flashing

Heavy gauge metal base



12109	1-1/2" - 2"-3" Aluminum	750405-121090	.91	12	7
12110	3" - 4" Aluminum	750405-121106	1.75	12	13

### Multi-Size™ Self-Seal® Galvanized Flashing

Rustproof, stamped galvanized, 24 to 28 gauge

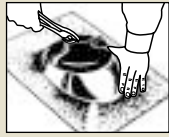


12209	1-1/2" - 2"-3" Galvanized	750405-122097	.92	12	17
12210	3" - 4" Galvanized	750405-122103	1.90	12	23

# Roof Flashings

## Multi-Size Self-Seal® Flashings (cont.)

Product No.	Description	U.P.C. Code	Cu.Ft	Pack	Ct. Wt.
-------------	-------------	-------------	-------	------	---------



### Multi-Size™ Self-Seal® Copper Flashing

Copper flashings are ideal for cedar shake roofs and coastal applications, and will weather to a rich patina color. Heavy gauge metal base.

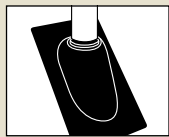
12403	1-1/2" - 2"-3" Copper	750405-124039	.90	12	15
12404	3" - 4" Copper	750405-124046	1.68	12	20



### Multi-Size™ Self-Seal® Thermoplastic Flashing

Non-fading and non-cracking, rigid black thermoplastic base.

14185	1-1/2" - 2"-3" Thermoplastic	750405-141852	.80	12	8
14186	3" - 4" Thermoplastic	750405-141869	1.03	12	9



### Multi-Size™ High-Rise™ Self-Seal® Thermoplastic Flashing

Flash any vent stack opening on roof pitches 10° to 60°.

14187	1-1/2" - 3" High-Rise™ Thermoplastic	750405-141876	1.58	6	1.2
14188	3" - 4" High-Rise™ Thermoplastic	750405-141883	1.58	6	1.4

## Color-Flash® Roof Flashing



- No-Calk® All-Flash® Color-Flash® Roof Flashing handles 1.5" - 3" and 3" - 4" pipe sizes.
- Available in aluminum or galvanized.
- Matches the color of your roof.
- Available in black, gray and brown.
- Do not use petroleum based products on collars.

Product No.	Description	U.P.C. Code	Cu.Ft	Pack	Ct. Wt.
-------------	-------------	-------------	-------	------	---------

### Aluminum No-Calk® All Flash® Color-Flash® Roof Flashing

12944	1.5" - 3" Aluminum Brown	038753-129440	.91	12	7
12943	1.5" - 3" Aluminum Black	038753-129433	.91	12	7
12942	1.5" - 3" Aluminum Gray	038753-129426	.91	12	7
12955	3" - 4" Aluminum Brown	038753-129556	1.75	12	13
12954	3" - 4" Aluminum Black	038753-129549	1.75	12	13
12953	3" - 4" Aluminum Gray	038753-129532	1.75	12	13

### Galvanized No-Calk® All Flash® Color-Flash® Roof Flashing

11872	1.5" - 3" Galvanized Brown	038753-118727	.92	12	17
11873	1.5" - 3" Galvanized Black	038753-118734	.92	12	17
11874	1.5" - 3" Galvanized Gray	038753-118741	.92	12	17
11875	3" - 4" Galvanized Brown	038753-118758	1.90	12	23
11876	3" - 4" Galvanized Black	038753-118765	1.90	12	23
11878	3" - 4" Galvanized Gray	038753-118789	1.90	12	23

## Electrical Service Mast (ESM) Roof Flashing



- Galvanized base.
- Do not use petroleum based products or paints on flashing collar. Not for hot-mopped or built-up roofs.
- Self-sealing collar slides over pipe and requires no caulking.
- Collar unattached from flashing base for electrical service mast applications.

Product No.	Description	U.P.C. Code	Cu.Ft	Pack	Ct. Wt.
11536	1.25" Galvanized ESM	038753-115368	.73	25	27
11549	1.5" Galvanized ESM	038753-115498	.73	25	32
11552	2" Galvanized ESM	038753-115528	.73	25	28
11565	2.5" Galvanized ESM	038753-115658	.73	25	30

## Universal Pipe Flashing



- A revolutionary advancement in self-sealing pipe flashing systems.
- Designed for the growing profiled roofing market, the ARFCO Master Boot incorporates features that put us years ahead of the competition.
- Master Boot can be used with any type roofing material i.e. asphalt, plastic, tile, rubber, metal, etc. The applications are endless.
- Master Boot's self-sealing Stepcone® boot is made of premium grade E.P.D.M. which gives it maximum resistance to weathering due to ozone and U.V. light.
- Master Boot's base has a flexible aluminum alloy rim molded in that assures a formed fit and corrosion resistance.
- The Master Boot provides a permanent seal that is unaffected by expansion/contraction vibration, ice/snow, hail stones, etc.
- Master Boot installs in about 10 minutes and is available in 11 different sizes to fit all pipes, vents and coated wires from 1/8" thru 26".

Product No.	Size	Flashing Details	Base Size	U.P.C. Code	Cu.Ft	Pack	Ct. Wt.
<b>Master Boot</b>							
16250	1/8"- 3/4" 3mm to 20mm	A:1/16" • B:1/8"-3/4" C:2-1/4"	2.25 x 2.25	750405-162505	.04	12	2
16251	1/4"- 2" 6mm to 50mm	A-Closed • B:1/4"-2" C:4-1/2"	4.5 x 4.5	750405-162512	.05	6	2
16252	1-1/4"- 3" 32mm to 76mm	A:7/8" • B:1/4"-3" C:6"	6 x 6	750405-162529	.13	6	3
16253	1/4" - 4" 6mm to 102mm	A-Closed • B:1/4"-4" C:8"	8 x 8	750405-162536	.22	6	4
16254	3" - 6" 76mm to 152mm	A:2-1/2" • B:3"-6" C:10"	10 x 10	750405-162543	.42	6	6

# Roof Flashings

## Universal Pipe Flashing (cont.)

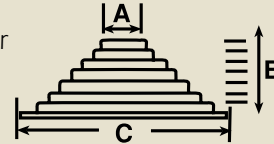


### Flashing Details\*

A = Top opening diameter

B = Cut to suit pipe size

C = Base dimensions

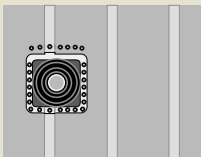


Check diameter of pipe.

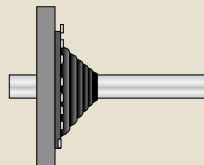
Select the appropriate Master Flash for pipe or duct diameter.

For extreme pitch or surface irregularity, select next larger size.

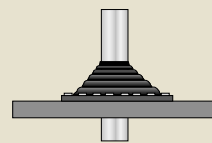
Product No.	Size	Flashing Details	Base Size	U.P.C. Code	Cu.Ft	Pack	Ct. Wt.
<b>Master Flash</b>							
16255	4" - 7" 102mm to 178mm	A:3-1/2" • B:4"-7" C:11"	11 x 11	750405-162550	.40	2	4
16256	5" - 9" 127mm to 228mm	A:4" • B:5"- 9" C:12"	12 x 12	750405-162567	.54	2	5
16257	6" - 11" 152mm to 280mm	A:5" • B:6"-11" C:14"	14 x 14	750405-162574	.82	2	6
16258	7" - 13" 178mm to 330mm	A:6" • B:7"-13" C:17"	17 x 17	750405-162581	1.12	2	7
14059	10" - 18" 254mm to 467mm	A:8-1/2" • B-10"-18" C:25"	25 x 25	038753-140599	2.10	5	23



With the Master Flash you don't have to worry about centering the pipe on a rib or flat. The flexible aluminum alloy rim is easily formed to any panel configuration regardless of depth or where the penetration exists.



The Master Flash makes wall penetrations weather-tight and airtight; inside or outside - the applications are endless!



With 11 different sizes to choose from, the Master Flash can be customized to seal penetrations from 1/8" thru 26".

### Numerous Applications:

- Plumbing, heating/air conditioning vents and equipment
- Electrical service entrances
- Solar collection pipes
- Grain augers
- TV aerials
- Environmental control
- Masts, vents or pipes through decks or bulkheads
- Lightning conductors
- Pest control

Trim to suit pipe diameter. Trimmed M-B opening should be 20% less than pipe diameter.



### EPDM Specifications

Advanced Ozone tested to: 70 hours@500 pphm  
High temperature tested to: Intermittent +135°C (+275°F)  
Continuous +100°C (+212°F)

Low temperature tested to: -55°C (-65°F)  
Tensile strength minimum: 10 MPa (1450 psi)  
Compression set maximum: 25%

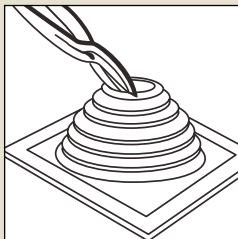
## ARFCO Deck-Master Boot



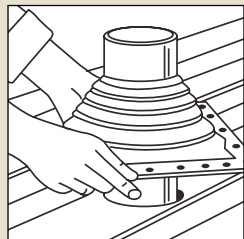
- Deck-Master Pipe Flashing offer quality solutions to today's dynamic industry requirements.
- ARFCO Deck-Master Flashings are designed to seal a wide range of penetration applications.
- Easy to handle, quick installation, no special tools required.
- Designed for pipes from 4" through 18" in diameter.
- Flexible, weather-resistant E.P.D.M.
- Pleated cone adjusts to any roof pitch and allows for complete flexibility.
- Flexible, corrosion-resistant aluminum base conforms to any panel configuration.
- Effectively isolates the pipe from building movement created by expansion, contraction and vibration.
- Proven resistance to ozone and ultraviolet light.
- -30°F to +250°F continuous service temperature range.
- Compatible with pipes of steel, PVC, copper, and sheet metal.
- Attaches to most decks, aluminum, copper, lead, plastic, fiberglass, wood, etc.
- Applications include plumbing, heating and air conditioning pipes and vents, electrical service entrances, etc.

Product No.	Description	Base Size	U.P.C. Code	Cu.Ft	Pack	Ct. Wt.
14741	1/4" - 2" Deck-Master Boot	4-3/4"	750405-147410	.27	10	2
14742	1-3/4" - 3" Deck-Master Boot	6-1/4"	750405-147427	.27	10	4
14743	1/4" - 4" Deck-Master Boot	7-3/4"	750405-147434	.73	5	3
14744	3" - 6" Deck-Master Boot	9-1/4"	750405-147441	.73	5	5
14745	4" - 7" Deck-Master Boot	10-3/4"	750405-147458	.73	5	6
14746	5" - 9" Deck-Master Boot	12-1/2"	750405-147465	1.87	5	10
14747	6" - 11" Deck-Master Boot	14-1/2"	750405-147472	1.87	5	12
14748	7" - 13" Deck-Master Boot	16-1/2"	750405-147489	1.87	5	14
14749	10" - 18" Deck-Master Boot	25-3/8"	750405-147496	2.0	5	19

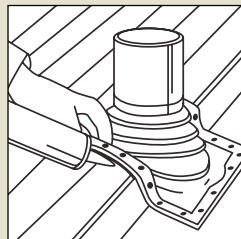
### 5 Easy steps for installing ARFCO Deck-Master Flashings



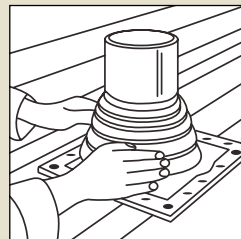
**Step 1**  
Cut ARFCO Deck-Master at appropriate pipe diameter marking.



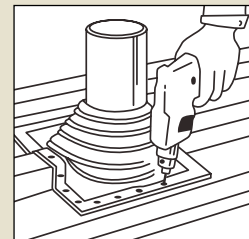
**Step 2**  
Slide ARFCO Deck-Master flashing down over pipe.



**Step 3**  
Apply sealant on underside of flexible aluminum base.



**Step 4**  
Press ARFCO Deck-Master base into contours of panel configuration.



**Step 5**  
Fasten ARFCO Deck-Master with self-drilling fasteners. Apply additional sealant around base if desired.

# Roof Flashings

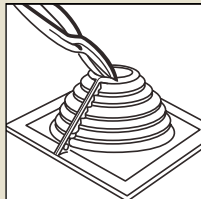
## Retro Master Boot



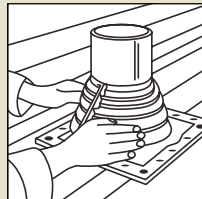
- A unique and revolutionary advancement in self-sealing pipe flashing systems.
- Designed for applications where continuous pipes or obstructions prevent the use of standard ARFCO Deck-Master flashings.
- Made of flexible, weatherproof E.P.D.M. rubber.
- Corrosion-resistant aluminum base can be easily shaped to conform to most roof profiles.
- Unique stainless steel closure effectively resists corrosion and provides a positive weatherproof seal.
- The pliable cone and stainless steel closure can easily be trimmed to the exact diameter of pipe to be flashed.
- Isolates the pipe from building movement caused by expansion, contraction, and vibration.
- -30°F to +250°F continuous service temperature range.
- Easily installed by wrapping around existing pipe and fastening down onto most roof decks.
- Pipe diameter markings on the flexible cone in inches and millimeters.

Product No.	Description	Base Size	U.P.C. Code	Cu.Ft	Pack	Ct. Wt.
14751	1/2" - 4" Retro-Master Boot	8-3/16"	750405-147519	.73	10	3
14752	4" - 9-1/4" Retro-Master Boot	14-1/4"	750405-147526	1.87	5	6
14753	9-1/4" - 16-1/4" Retro-Master Boot	21-1/2"	750405-147533	1.87	5	10

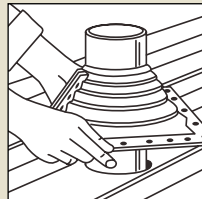
### ARFCO Retro Deck-master Flashings offer quick, easy installation!



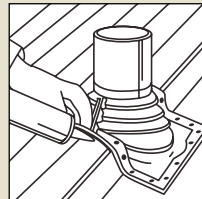
**Step 1**  
Begin cutting opposite the mechanical locking joint. Cut through the joint with tin snips.



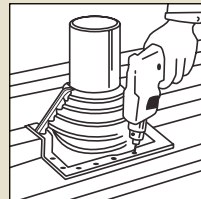
**Step 2**  
Wrap ARFCO Retro Master Boot around the pipe. Engage the top section of the joint first, then proceed down until joint is completely engaged.



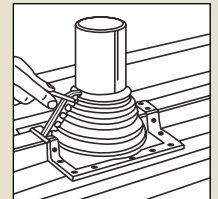
**Step 3**  
Press ARFCO Retro Master Boot down, bending it to conform to roof profile or roof irregularities. A blunt tool will help press flashing into tight roof angles.



**Step 4**  
Apply sealant to the underside of the ribbed aluminum base. Press ARFCO Retro Master Boot against the contours of the panel configuration.

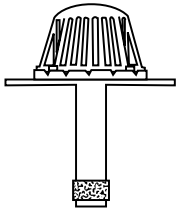


**Step 5**  
Attach ARFCO Retro Master Boot to the panel with self-drilling screws. Space screws as necessary to avoid gaps between the base and the panel.



**Step 6**  
Apply additional sealant to any gaps of the ARFCO Retro Master boot and install supplied cable tie at upper-most part of boot.

## Insert Drains



- Insert Drains install quickly and effortlessly with no special tools required.
- Flush mounting drain with a self-expanding modified asphalt seal.
- Seal provides a watertight block in porous and eccentric pipes and absorbs vibration which protects the integrity of the system.
- Insert drain comes in 4 sizes to fit into 3", 4", 5" and 6" drain pipes.
- Our insert drain has a large 14" flush mounting flange which gives the installer the added surface he needs to flash the drain in properly.
- The long 10" tube allows the seal to penetrate the pipe well below the existing drain by-passing the old system totally.

Product No.	Description	U.P.C. Code	Cu.Ft	Pack	Ct. Wt.
<b>ABS Insert Drains</b>					
14671	3" Plastic Dome	750405-146710	1.81	1	4
14672	4" Plastic Dome	750405-146727	1.81	1	4
14680	3" Cast Aluminum Dome	750405-146802	1.81	1	9

## Roof Drain Accessories



Product No.	Description	U.P.C. Code	Cu.Ft	Pack	Ct. Wt.
47700	Underdeck Clamp Kit for Roof Drains	038753-477008	0.17	1	1.5
47701	ABS 16" Receiver Pan for Roof Drains	038753-477015	0.17	1	1.2
71970	Plastic Gravel Guard	038753-719702	0.01	1	1.3
71960	Dam Collar	038753-719603	0.01	1	1.5
71980	Plastic Dome	038753-719801	0.73	1	0.4
71990	Cast Iron Dome	038753-719900	0.73	1	1.0

# Roof Drains

## Roof Drains

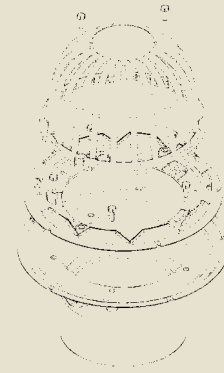


- Designed to drain rainwater from a flat roof.
- Arfco Commercial Roof Drains comply with IAPMO Property Standard 47-99 Utility.
- Aesthetically pleasing dome design provides flow area exceeding 200 in<sup>2</sup>.
- Unique, round dome design includes easy removal from drain independent of gravel guard and membrane clamp.
- Domes available in black cast iron or UV-stable ABS.
- Contoured sump design allows for easy, free flow and resists material build-up.
- Drain bases available to fit: - Over 2" ABS/PVC pipe - Over 3" ABS/PVC pipe - Over 4" ABS/PVC pipe - Over 6" ABS/PVC pipe.
- Receiver Pan designed to increase the 12" diameter of the base to 16".
- Five pre-formed anchor positions included in base design.
- A 2" Dam Collar is available for supplementary drain system.



Product No.	Description	U.P.C. Code	Cu.Ft	Pack	Ct. Wt.
<b>PVC Roof Drain (with Plastic dome &amp; Gravel Guard)</b>					
78012	2" PVC Drain	038753-780122	1.10	1	4.3
78013	3" PVC Drain	038753-780139	1.10	1	4.3
78014	4" PVC Drain	038753-780146	1.10	1	4.5
78016	6" PVC Drain	038753-780160	1.10	1	4.8
<b>PVC Roof Drain (with ABS Dome &amp; Dam Collar)</b>					
78032	2" PVC Drain	038753-780324	1.10	1	4.3
78033	3" PVC Drain	038753-780337	1.10	1	4.3
78034	4" PVC Drain	038753-780344	1.10	1	4.5
78036	6" PVC Drain	038753-780368	1.10	1	4.8
<b>PVC Roof Drain (Cast Iron Dome &amp; Gravel Guard)</b>					
78022	2" PVC Drain	038753-780221	1.10	1	9.6
78023	3" PVC Drain	038753-780238	1.10	1	9.6
78024	4" PVC Drain	038753-780245	1.10	1	9.75
78026	6" PVC Drain	038753-780269	1.10	1	10
<b>PVC Roof Drain (Cast Iron Dome &amp; Dam Collar)</b>					
78042	2" PVC Drain	038753-780429	1.10	1	9.6
78043	3" PVC Drain	038753-780436	1.10	1	9.6
78044	4" PVC Drain	038753-780443	1.10	1	9.75
78046	6" PVC Drain	038753-780467	1.10	1	10

## Roof Drains (cont.)



Product No.	Description	U.P.C. Code	Cu.Ft	Pack	Ct. Wt.
<b>ABS Roof Drain (Plastic Dome &amp; Gravel Guard)</b>					
88012	2" ABS Drain	038753-880129	1.10	1	4.3
88013	3" ABS Drain	038753-880136	1.10	1	4.3
88014	4" ABS Drain	038753-880143	1.10	1	4.5
88016	6" ABS Drain	038753-880167	1.10	1	4.8
<b>ABS Roof Drain (Cast Iron Dome &amp; Gravel Guard)</b>					
88022	2" ABS Drain	038753-880228	1.10	1	9.6
88023	3" ABS Drain	038753-880235	1.10	1	9.6
88024	4" ABS Drain	038753-880242	1.10	1	9.75
88026	6" ABS Drain	038753-880266	1.10	1	10
<b>ABS Roof Drain (ABS Dome &amp; Dam Collar)</b>					
88032	2" ABS Drain	038753-880327	1.10	1	4.3
88033	3" ABS Drain	038753-880334	1.10	1	4.3
88034	4" ABS Drain	038753-880341	1.10	1	4.5
88036	6" ABS Drain	038753-880365	1.10	1	4.8
<b>ABS Roof Drain (Cast Iron Dome &amp; Dam Collar)</b>					
88042	2" ABS Drain	038753-880426	1.10	1	9.6
88043	3" ABS Drain	038753-880433	1.10	1	9.6
88044	4" ABS Drain	038753-880440	1.10	1	9.75
88046	6" ABS Drain	038753-880464	1.10	1	10

# Roof Ventilation

## Breathers and Vents



- Arfco Breathers and Vents are the quality solution to moisture problems on commercial roofs by allowing the moisture to escape up through and out of the system.
- Aluminum Breathers and Vents One-Way/Two-Way: Easy installation.
- Heavy gauge spun aluminum.
- Venting for all types of installation.
- Securely attached cap.
- Extra-wide 4" base opening.
- Flange may be primed with asphalt based coating.
- Cap has unique design which shields entry of wind-blown rain and snow.
- Optional foam insert to prevent condensation build-up.
- Plastic Breathers and Vents One-Way/Two-Way: High density polyethylene (black) for BUR and modified bitumen applications.
- Or PVC (white) UV stabilized for PVC membrane and polyurethane foam applications.
- Easy installation.
- Locking vandal-proof cap prevents entry of wind-blown rain or snow.

Product No.	Description	U.P.C. Code	Cu.Ft	Pack	Ct. Wt.
14726	HDPE roof Breather, 1-Way	750405-147267	4.5	25	20
14730	Spun. Alum. Roof Breather, 2-way	750405-147304	6.5	25	21
14731	Spun. Alum. Roof Breather, 1-way	750405-147311	6.5	25	21

# Hand Cleaners

## Hand Cleaners



Product No.	Description	U.P.C. Code	Pack	Ct. Wt.
30221	16 oz. Hand Cleaner	038753-302218	12	14
45314	15 oz. Hercules Lemon Lotion	032628-453142	12	13.8
45333	Towels	032628-453333	6	10.5
45333T	Towel Display	032628-453333	30	65

